

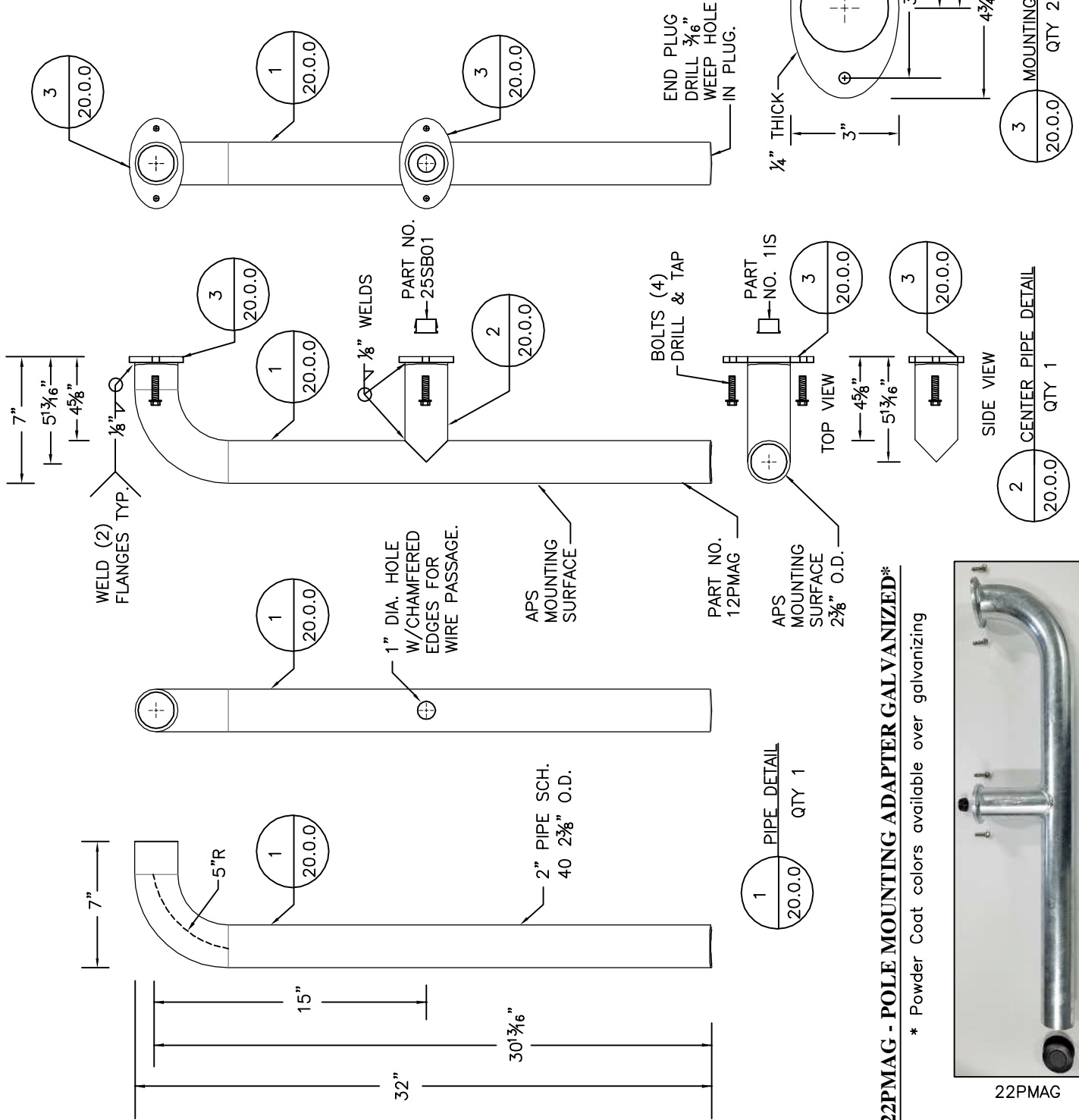
22PMAG POLE MOUNTING ADAPTER GALVANIZED* ASSEMBLY INCLUDED PARTS:

HARDWARE MEETS OR EXCEEDS STATE SPECIFICATIONS

- (1) 12PMAG POLE MOUNTING ADAPTER WELDED PIPE AND FLANGES – GALVANIZED*
- (1) 22PMAGPK POLE MOUNTING ADAPTER PARTS KIT:
 - (1) 25RNC END PLUG**
 - (4) ¼"x1"-20 SERRATED FLANGE BOLT – DRILL & TAP POLE
 - (1) 25SB01 – 1" SNAP BUSHING (REQUIRES 1" HOLE IN POLE)

* POWDER COAT COLORS AVAILABLE OVER GALVANIZING.
 ** DRILL ⅜" WEEP HOLE IN PLUG.

NOTE: APPLY ANTI-SEIZE LUBRICANT TO THREADED SURFACES.



22PMAG - POLE MOUNTING ADAPTER GALVANIZED*

* Powder Coat colors available over galvanizing



22PMAG
NOT TO SCALE.

FREY
 Manufacturing Corp.
 www.FreyMfgCorp.com
 Made in USA
 Phone: 952-467-4402

POLE MOUNTING ADAPTER GALVANIZED
 ASSEMBLY NO. 22PMAG (Powder Coat colors available)
 FOR
 POLE MOUNTING ACCESSIBLE PEDESTRIAN SIGNAL
 (APS)

DATE	DWG. NO.	REV.
11-09-18	20.0.0	-