

11SA SUPPLIED HARDWARE:

(1) 11SA(NF)* ALUMINUM CASTING ONLY see below for assemblies

*225SAC(NF) SUPPLIED HARDWARE FOR CAMPBELL SWITCH

INCLUDED PARTS:

- (2) 11SA(NF)* ANODIZED ALUMINUM CASTINGS
- (2) 1/4" X 4" COUNTERSUNK HEAD BOLTS
- (2) 1 1/4" 1/4" INSERT NUTS FOR SCHEDULE 40 PIPE
- (1) 1/2" INSULATION SLEEVE

*225SAPO(NF) FOR OLD STYLE POLARA SWITCH INCLUDED PARTS:

- (2) 11SA(NF)* ANODIZED ALUMINUM CASTINGS
- (2) 1/4" X 5 1/2" HEX HEAD BOLTS
- (2) 1 1/4" 1/4" INSERT NUTS FOR SCHEDULE 40 PIPE
- (2) 1/4" FLAT WASHERS
- (2) 1/4" LOCK WASHERS
- (1) 1/2" INSULATION SLEEVE

*325SAPN(NF) FOR NEW STYLE POLARA SWITCH INCLUDED PARTS:

- (3) 11SA(NF)* ANODIZED ALUMINUM CASTINGS
- (2) 1/4" X 5 1/2" HEX HEAD BOLTS
- (1) 1/4" X 3 1/2" HEX HEAD BOLT
- (3) 1 1/4" 1/4" INSERT NUTS FOR SCHEDULE 40 PIPE
- (3) 1/4" FLAT WASHERS
- (3) 1/4" LOCK WASHERS
- (1) 1/2" INSULATION SLEEVE

*NF DESIGNATES A NATURAL FINISH (NOT CLEAR ANODIZED)

APPLY ANTI-SIEZE COMPOUND TO ALL THREADED PARTS.

SEE DRAWING 14.3.0 FOR TEMPLATES TO MOUNT CAMPBELL OR POLARA SWITCHES.

Not To Scale

FREY

MANUFACTURING CORPORATION

13150 STEWART AVE., NORWOOD, MN 55368
VOICE: 952-467-4402; FAX: 1-66-941-FREY

11SA 2 1/2" SADDLE ADAPTER

225SAC 2 1/2" SADDLE ADAPTER - Campbell
225SAPO 2 1/2" SADDLE ADAPTER - Polara Old
325SAPN 2 1/2" SADDLE ADAPTER - Polara New
*See note above Patent Pending

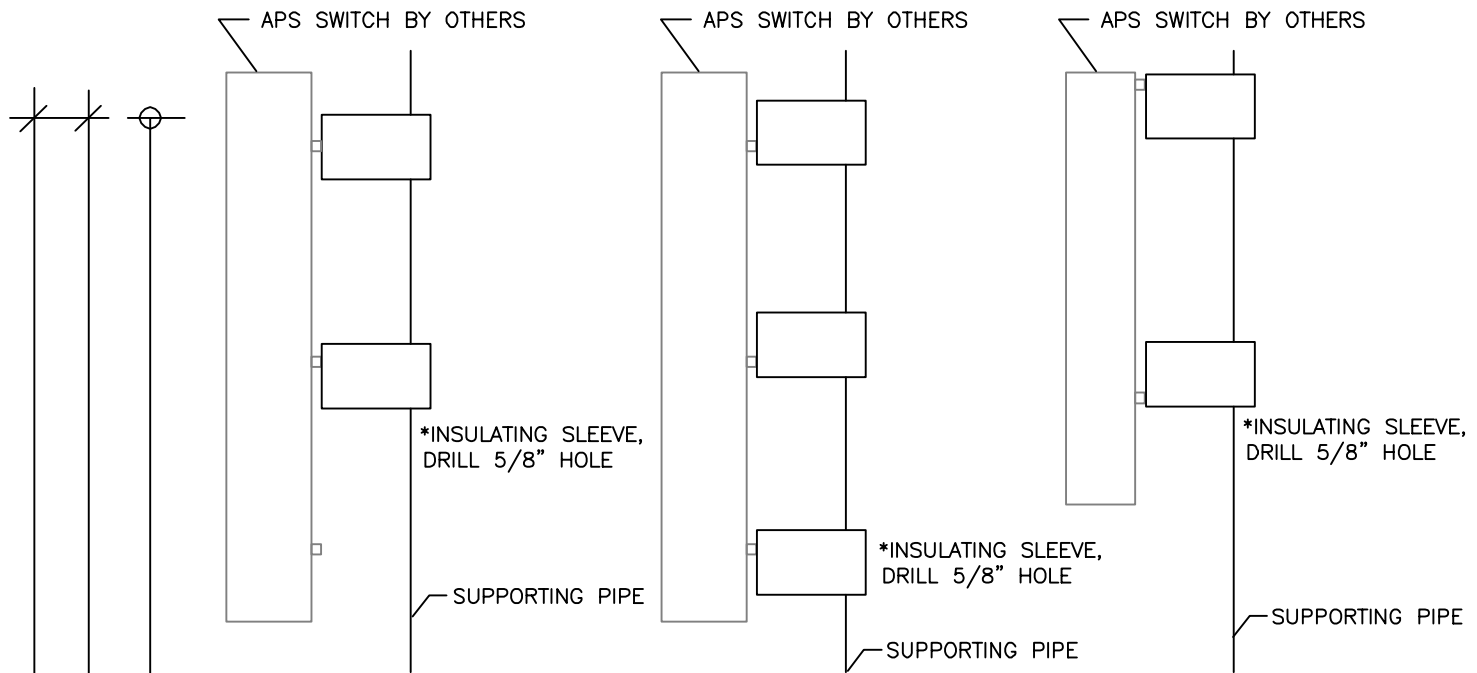
DATE

03-18-14

DWG. NO.

14.2.0

REV.



225SAPO
ELEVATION
POLARA OLD STYLE

325SAPN
ELEVATION
POLARA NEW STYLE

225SAC
ELEVATION
CAMPBELL

CENTER OF SWITCH
BUTTON TO BE 42" ABOVE
GRADE OR AS SPECIFIED.

FIELD PLACE SWITCH
TEMPLATE SO PUSHBUTTON
IS 42" ABOVE GRADE, OR
AS OTHERWISE SPECIFIED.

CAPTIVE FASTENER
USE SHARP 25/64"
DRILL FOR SCH. 40 PIPE,
OR DRILL AND TAP
SCHEDULE 80 PIPE
1/4"-20 THREADS

NOTE: INSTALL 1/4" INSERT
NUTS WITH SETTING TOOL.

*INSULATING SLEEVE,
DRILL 5/8" HOLE

APPLY ANTI-SEIZE
LUBRICANT TO ALL
THREADED SURFACES.

6"

8 1/4"

3/4"

POLARA

1/2" For new style Polara switch, drill
additional 3rd hole 6" down.

LOWEST ADAPTER
DRILL 5/8" HOLE FOR
INSULATION SLEEVE

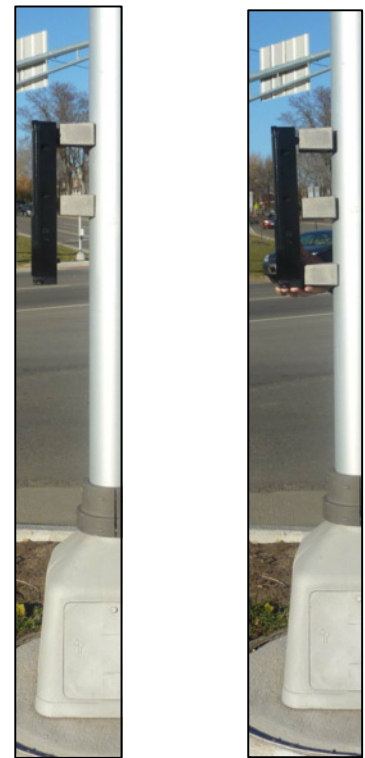
SEE DWG. 14.2.0 FOR
PARTS DESCRIPTION AND
PLAN VIEW.

5/8" HOLE FOR
INSULATION SLEEVE

1/2"

CAMPBELL

3/4"



225SAPN

325SAPN

Illustrated use.

Scale: 1"=1"

IF THIS LINE IS NOT 1 INCH LONG,
ADJUST MEASUREMENTS ACCORDINGLY.
DO NOT PHOTOCOPY ORIGINAL.

THESE TEMPLATES DO NOT SUPERSEDE SWITCH MANUFACTURER'S TEMPLATES.

FREY

MANUFACTURING CORPORATION

13150 STEWART AVE., NORWOOD, MN 55368

VOICE: 952-467-4402; FAX: 1-866-941-FREY

SADDLE ADAPTER APS HOLE TEMPLATES

DATE

8-7-13

DWG. NO.

14.3.0

REV.