

32UB UNIVERSAL HUB BOLTED SCH 80 SUPPLIED HARDWARE
 HARDWARE MEETS OR EXCEEDS Mn/DOT SPECIFICATIONS

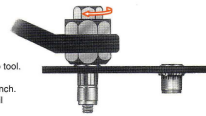
- (1) 11D UNIVERSAL HUB ALUMINUM CASTING
- (1) 1" X 3/4" BUSHING
- (1) 1 1/4" X 2" PVC WIREWAY
- (1) 1 1/4" O RING SEAL
- (2) 1/2" X 2" BOLT*
- (2) 1/2" SPRING LOCK WASHER*
- (2) 1/2" FLAT WASHER*
- (2) HARDENED STEEL CAPTIVE INSERT NUT*

* NOTES:

1. Mn/DOT REQUIRES A COMPATIBLE SETTING TOOL BE USED TO SET THE CAPTIVE INSERT NUTS.
2. FOR USE ON A SCHEDULE 80 SUPPORT MEMBER. SCHEDULE 40 OR SMALLER SUPPORT MUST USE THE 32UB40 UNIVERSAL HUB BOLTED SCH 40 KIT.
3. APPLY ANTI-SEIZE LUBRICANT TO ALL THREADED SURFACES.

INSTALLATION:

- Thread insert onto tool.
- Place into hole.
- Hold tool with wrench.
- Tighten screw until insert installs.



WRENCH TOOL



RIVET NUT TOOL

SETTING TOOL REQUIRED FOR SETTING INSERT NUTS.
 1/2"-13 MANDREL FOR SCHEDULE 80 PIPE
 INSTALLATION SOLD BY OTHERS.

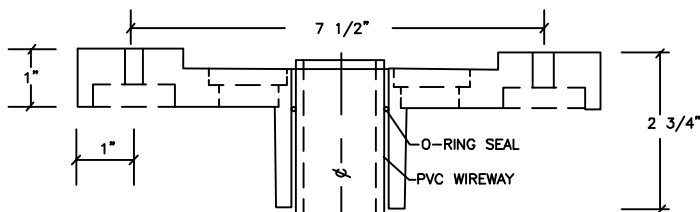


RECOIL INSERT INSTALLATION TOOL

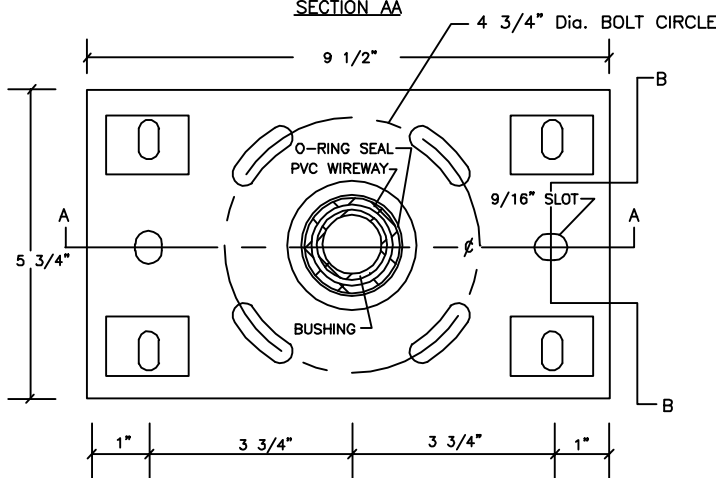
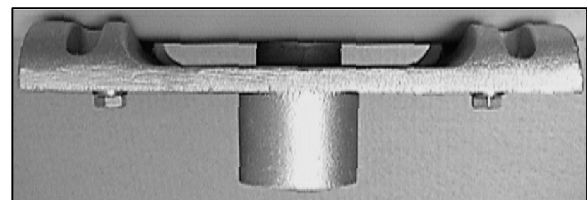
VARIOUS SETTING TOOLS

SEE TOOL SUPPLIER

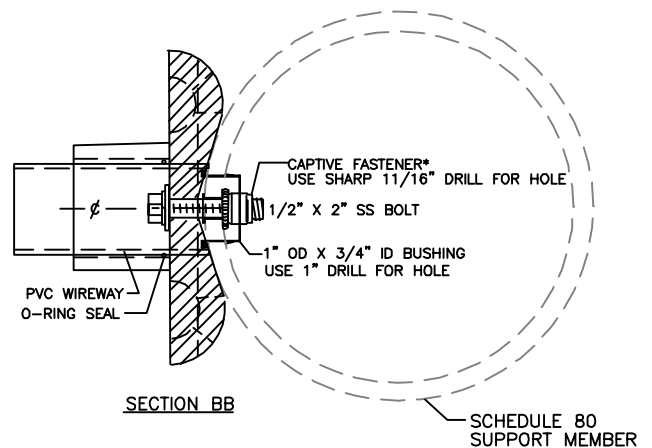
HARDWARE FOR SCHEDULE 80 PIPE



SECTION AA

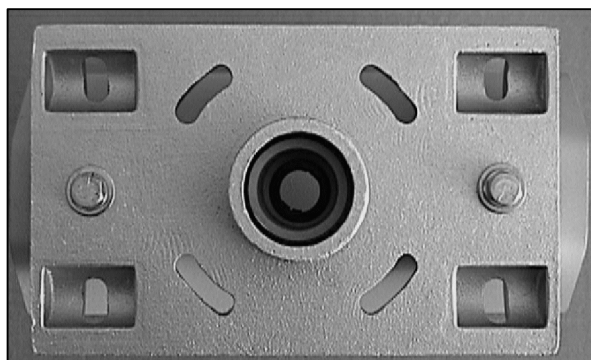


11D UNIVERSAL HUB CASTING

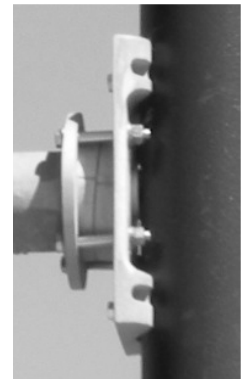
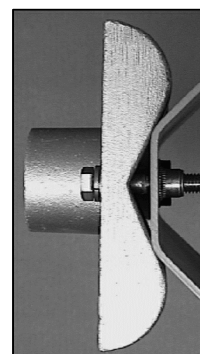


SECTION BB

SCHEDULE 80 SUPPORT MEMBER



NOT TO SCALE



32UB UNIVERSAL HUB - BOLTED SCH 80

REVESED DWG.
09-14-12

Frey Manufacturing Corporation
 13150 STEWART AVE., NORWOOD, MN 55368-9675
 VOICE/FAX 952-467-4402

DWG NO. 16.1
 REV -