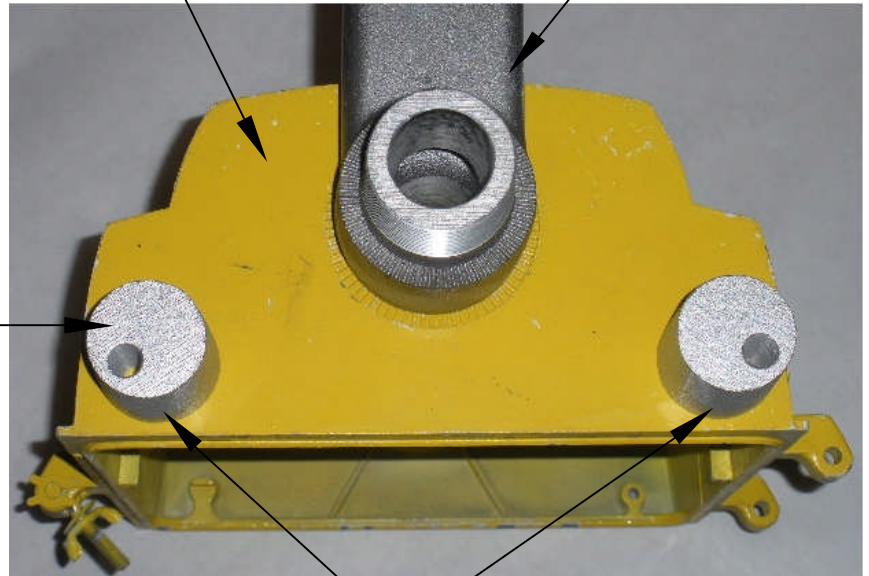
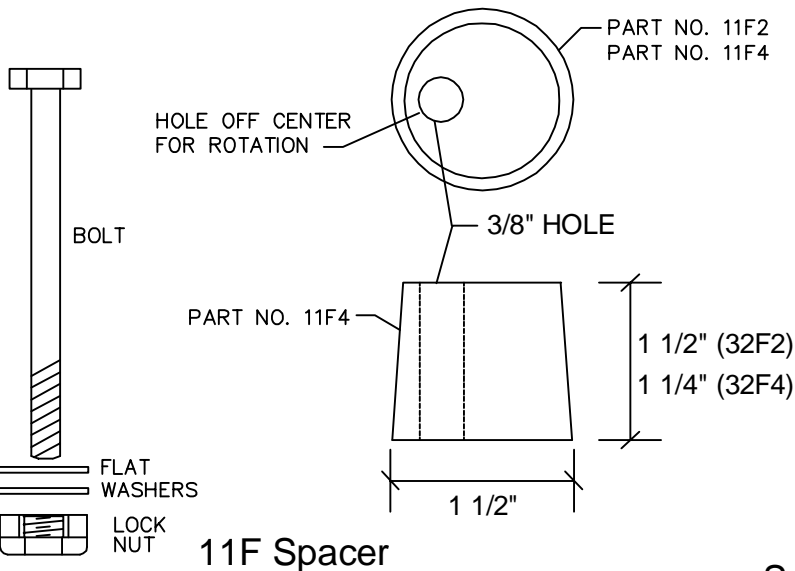


(2) SPACERS
REQUIRED

SIGNAL TOP VIEW SIGNAL MOUNT



ROTATE TO BEST POSITION
BETWEEN SIGNALS. ATTACH
USING SUPPLIED HARDWARE,
TWO REQUIRED PER MOUNT.
CASTING CAN BE INVERTED.



32F2 SPACERS SUPPLIED HARDWARE

HARDWARE MEETS OR EXCEEDS STATE SPECIFICATIONS
(2) 11F2 SPACER CASTING FOR 2 STIFFENER PLATES
(2) 1/4" X 31/2" BOLT
(4) 1/4" FLAT WASHER
(2) 1/4" LOCK NUT
APPLY ANTI-SEIZE LUBRICANT TO
ALL THREADED SURFACES.

32F4 SPACERS SUPPLIED HARDWARE

HARDWARE MEETS OR EXCEEDS STATE SPECIFICATIONS
(2) 11F4 SPACER CASTING FOR 4 STIFFENER PLATES
(2) 1/4" X 31/2" BOLT
(4) 1/4" FLAT WASHER
(2) 1/4" LOCK NUT
APPLY ANTI-SEIZE LUBRICANT TO
ALL THREADED SURFACES.

NOTES:

1. RECOMMENDED FOR 4 AND 5 SECTION PLASTIC SIGNAL ARRANGEMENTS SUPPLIED WITH (2) STIFFENER PLATES 32F2, OR (4) STIFFENER PLATES 32F4.
2. SPECIFIC JOB SPECIFICATIONS MAY REQUIRE THEM ON ALL PLASTIC SIGNAL VEHICLE ARRANGEMENTS.

Spacer

WHEN TWO (2) SIGNAL STIFFENER PLATES ARE SUPPLIED WITH SIGNALS, USE 32F2 (11F2 SPACER PAIR).

WHEN FOUR (4) SIGNAL STIFFENER PLATES ARE SUPPLIED WITH SIGNALS, USE 32F4 (11F4 SPACER PAIR).

ALSO SEE DWG. 9.05

NOT TO SCALE

<p>FREY Manufacturing Corp. www.FreyMfgCorp.com Made in USA Patent Pending Phone: 952-467-4402</p>	<p>11F SPACER 32F2 SPACER (PAIR FOR 2 STIFFENER PLATES) 32F4 SPACER (PAIR FOR 4 STIFFENER PLATES)</p>	DATE	DWG. NO.	REV.
		12-06-17	5A	2